

DISCONNECTED

An abstract painting by Andrea Luschi, featuring thick, expressive brushstrokes in a palette of warm yellows, oranges, and browns, contrasted with cooler blues, purples, and greys. The composition is dynamic and layered, with a prominent vertical white and yellow stroke on the right side. The overall effect is one of intense energy and emotional depth.

ANDREA LUSCHI

18 Aprile - 20 Giugno 2026 | Galleria Fidanda

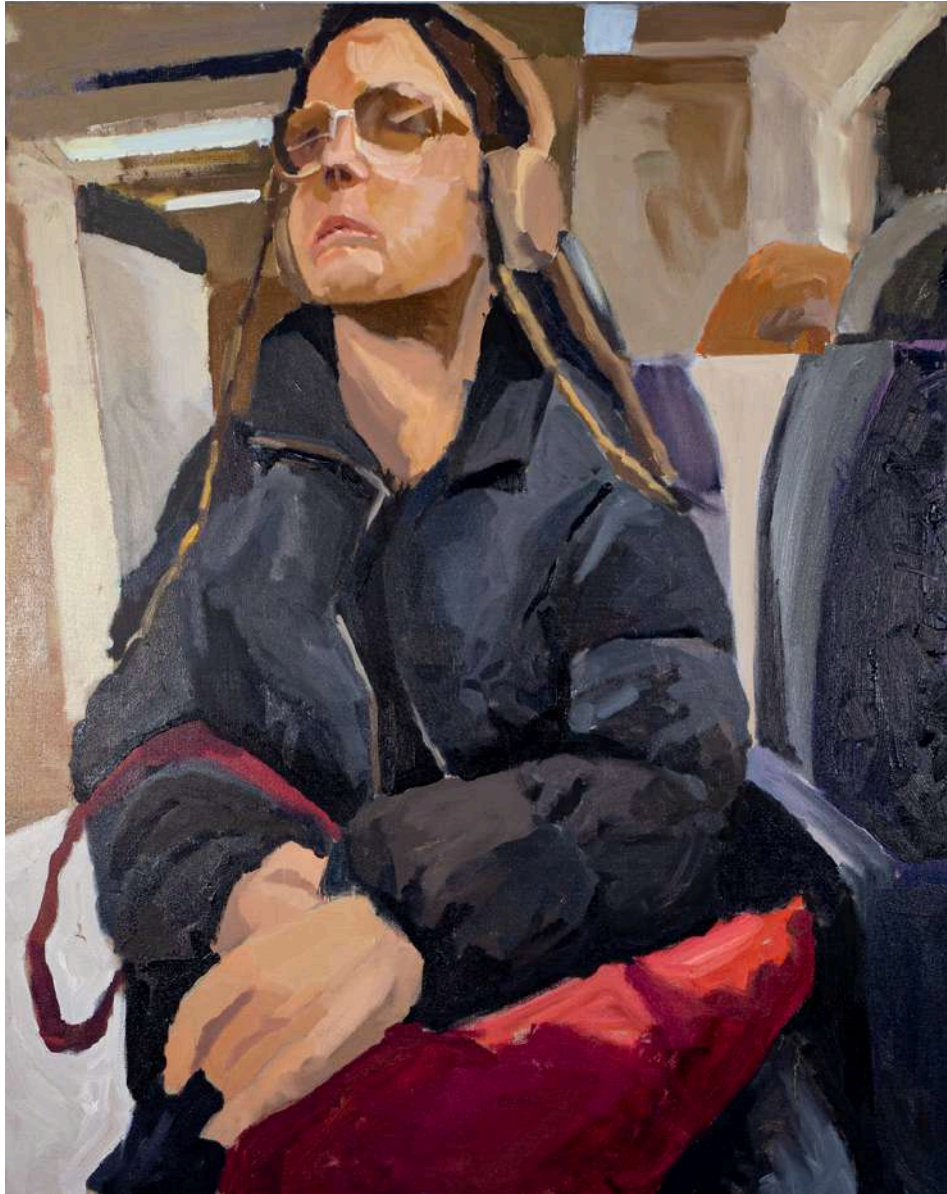


Disconnection

2024

Oil on linen

92x73cm



No Man's zone

2024

Oil on linen

92x73cm

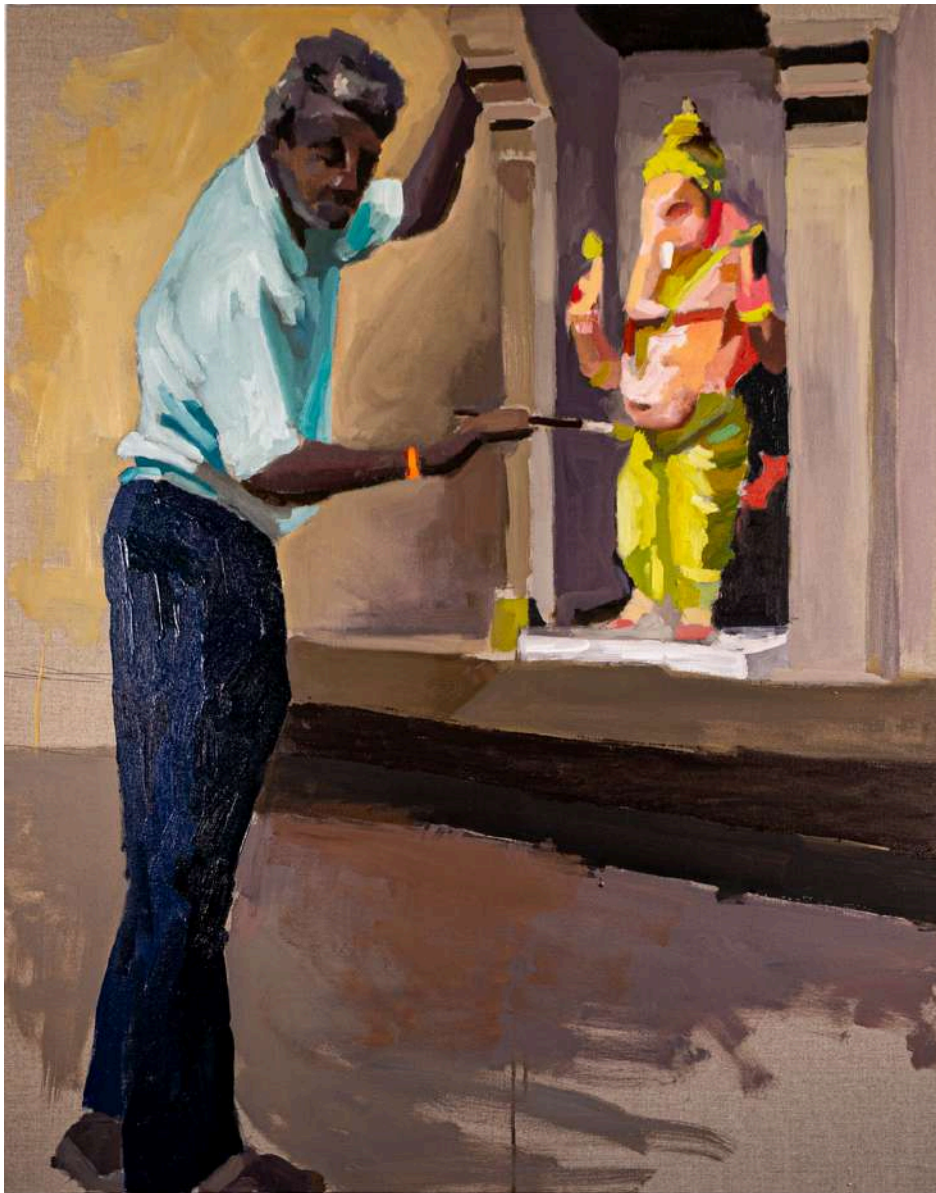


Palm Reflection

2025

Oil on linen

80x80cm



Manual labor
2024
Oil on linen
92x73cm



Vacation Blues

2025

Oil on linen

92x73cm



Safe Place
2024
Oil on linen
92x73cm



Gloom
2025
Oil on linen
92x73cm



Background noises

2025

Oil on linen

92x73cm



Subway scrollers

2025

Oil on linen

92x73cm



Absent while present

2025

Oil on linen

92x73cm



Quiet occupation

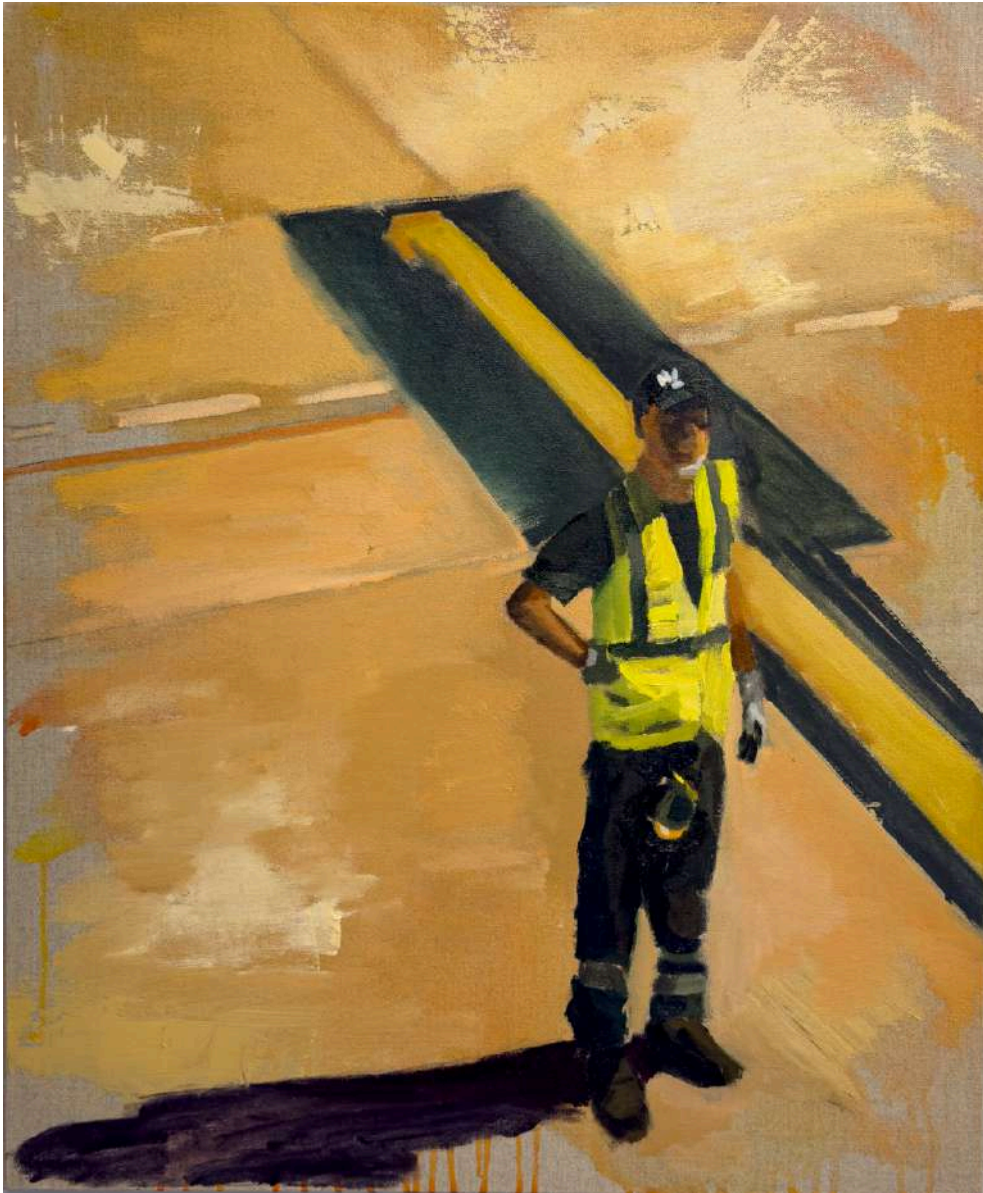
2025

Oil on linen

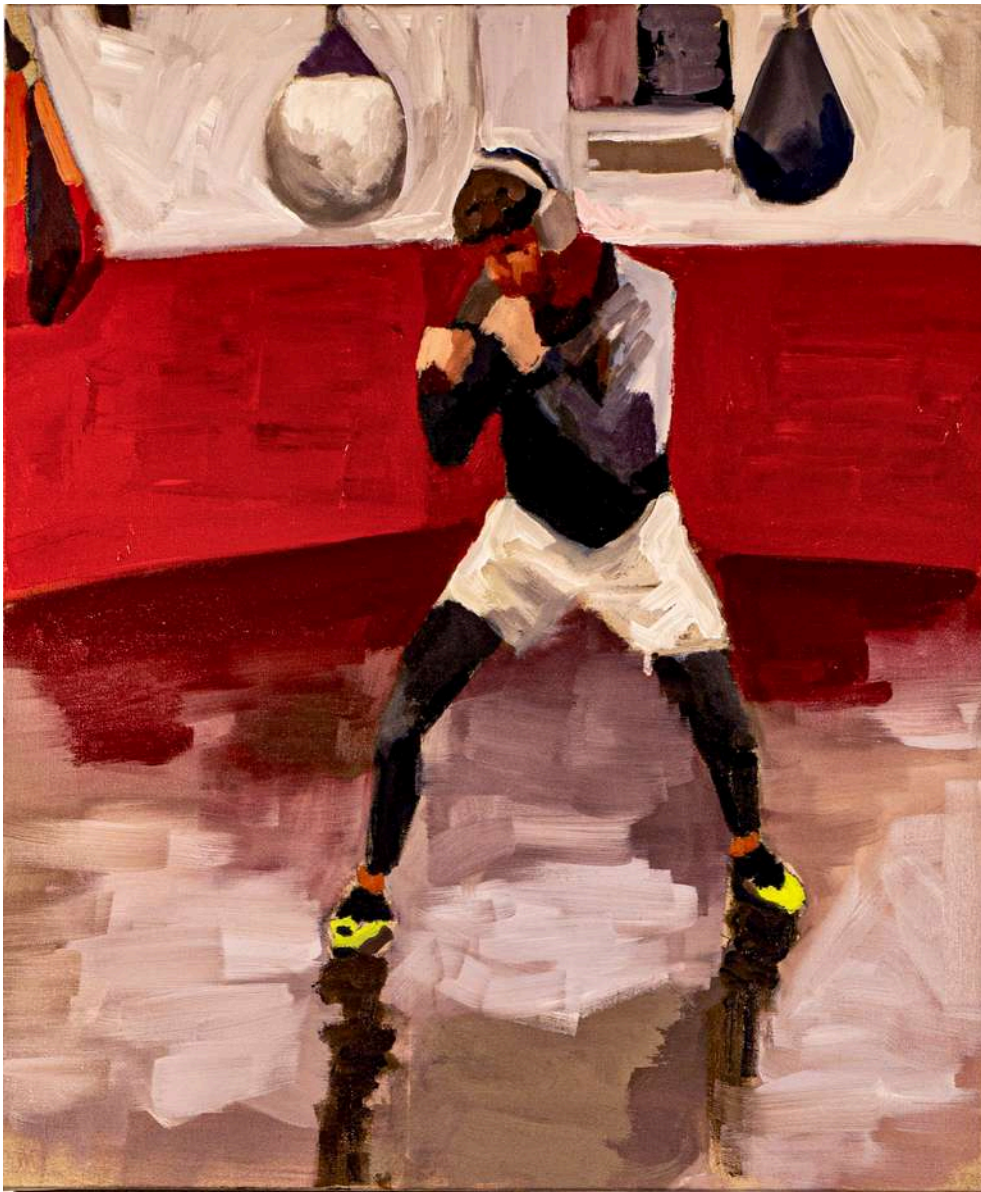
92x73cm



Area 5
2025
Oil on linen
65x54cm



Standing by
2025
Oil on linen
65x54cm



Boxer

2025

Oil on linen

65x54cm

Viviamo immersi in una condizione paradossale: mai come oggi siamo così connessi, eppure così distanti. *Disconnected* riflette su come la tecnologia stia cambiando il nostro modo di essere presenti.

Le opere nascono dall'osservazione di situazioni quotidiane — mezzi pubblici, spazi di passaggio, ambienti condivisi — in cui emerge una distanza sottile ma persistente. Le figure condividono lo stesso spazio ma restano isolate, assorbite dai propri dispositivi o da una dimensione interiore.

Attraverso la pittura, Luschi costruisce immagini in cui la relazione si indebolisce e lascia spazio a una coesistenza silenziosa e frammentata. Le forme sono semplificate e la composizione mette in evidenza la distanza tra le figure.

“Più siamo connessi, più ci isoliamo.”

— Andrea Luschi

Testo a cura di Cecilia Faleni
con interventi di Andrea Luschi

We live immersed in a paradoxical condition: never before have we been so connected, and yet so distant. *Disconnected* reflects on how technology is reshaping our way of being present.

The works originate from the observation of everyday situations — public transport, transitional spaces, shared environments — in which a subtle yet persistent distance emerges. The figures share the same space but remain isolated, absorbed in their devices or in an inner dimension that separates them from their surroundings.

Through painting, Luschi constructs images in which relationships weaken, giving way to a silent and fragmented coexistence. Forms are simplified, and the composition emphasizes the distance between the figures.

“The more connected we are, the more we isolate ourselves.”

— Andrea Luschi

Text by Cecilia Faleni

with contributions by Andrea Luschi



Andrea Luschi nasce a Livorno nel 1978 e vive a Barcellona da oltre vent'anni. Lavora principalmente con la pittura a olio, attraverso cui indaga scene di vita quotidiana capaci di evocare isolamento, una bellezza silenziosa e una dimensione emotiva trattenuta.

Nel tempo ha sviluppato un linguaggio visivo personale, influenzato da artisti come Edward Hopper e Eric Fischl. Il suo lavoro si concentra sulla tensione tra intimità e alienazione, in particolare all'interno di una realtà sempre più mediata dalla tecnologia.

Andrea Luschi was born in Livorno in 1978 and has been based in Barcelona for over twenty years. He works primarily in oil painting, focusing on everyday scenes that evoke a sense of isolation, quiet beauty, and restrained emotion.

Over time, he has developed a distinct visual language, informed by the work of Edward Hopper and Eric Fischl. His practice explores the tension between intimacy and alienation, particularly within a reality increasingly shaped and mediated by technology.

Contatti

Giacomo Fidanzi 338/2077300

Andrea Giomi 392/9674684

mail fidandagalleriarte@gmail.com

instagram @galleriafidanda

www.fidanda.com

Per informazioni e disponibilità delle opere, contattare la galleria.



FIDANDA
GALLERIA D'ARTE